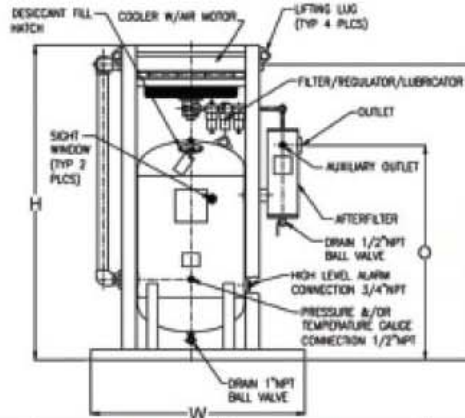
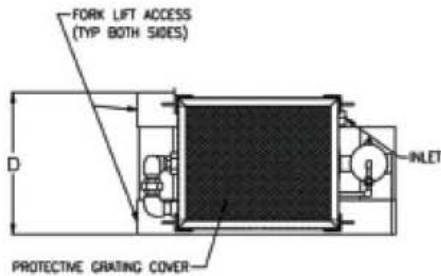




# Blast Pak Air Dryer System



- **Increase Blasting Profitability**
- **Eliminate Flash Rusting, Clogged Blast Pots and Downtime**
- **Small Footprint**
- **Complete Portability**
- **Low Pressure Drop**



Dimensions	FD-250	FD-400	FD-800	FD-1200	FD-1600
Part Number	80-1456	80-1430	80-1431	80-1416	80-1347
Height	77"	77"	83-3/4"	88"	94-1/2"
Inlet Height	71-9/16"	72-1/8"	78-3/8"	82-5/8"	89-3/8"
Depth	27"	26"	32-7/8"	32-7/8"	43"
Outlet Height	58-1/2"	58-9/16"	59-1/2"	60"	59-1/8"
Width	48"	49"	54"	60"	71-1/2"
Inlet Size	1 1/2" NPT(F)	2" NPT (F)	2-1/2" NPT(F)	2-1/2" NPT (F)	3" NPT (F)
Outlet Size	1 1/2" NPT(F)	2" NPT (F)	2-1/2" NPT(F)	3" NPT(F)	3" NPT (F)
Weight	660 lbs	760 lbs.	1155 lbs.	1525 lbs.	1875 lbs.
Air Motor SCFM	17	25	70	70	150

Steel Skid forklift Channels and Lifting Lugs for Portability

Air Motor Includes FRL and Muffler

Epoxy Inter Dryer Coating for Long Vessel Life

Optional Pneumatic Demand Drain prevents Air Loss

Downstream Particulate Filter with Permanent Stainless Steel Mesh

Two Dryer Sight Windows for Desiccant Level Viewing

